

Vola SkiAlpPro for USSA Masters FAQ First Run Start Order

The first run start order for a USSA Masters is random draw within age class, following the standard age class running order of USSA Masters rules. The start order can be prepared using the standard *Start List* operation *Prepare with Competitors (Draw)*, combined with a filter that provides the age class running order.

Preparation

Your *Local Configuration* settings should be set to USA national regulations and be in either *Management* mode or *Timing* mode with a license key USB installed.

Your masters event should be set up following the instructions in the "Masters Event Settings" FAQ with the USSA Masters age class categories installed and competitor fields appropriate for a masters age class competition set. The competitors should be entered and all properly prepared with bib, year of birth, and age class category, as described in the "Prepare Competitors List" FAQ. Any license issues and short term memberships should be checked and resolved prior to the start of the race.

Download the standard configuration file resources for working with USSA Masters events from <http://ussamasters.org/raceops/vola>.

Create First Run Start Order

On the *Start List* button on the *Manage Runs* screen to open the *Start List* editor. Click the *Options* button at the lower left to display the list of operations on the start list and select *Prepare with Competitors (Draw)* to perform a random draw on the competitors in the event. (Figure 1)

On the *Prepare with Competitors (Draw)* dialog (Figure 2), the *Selection* section displays the number of competitors in the *Classified* field. Initially all competitors are selected. To perform the random draw within age groups, click on the *Filters* button and load the filter specifications for the standard USSA Masters age class running order from **filters/ussa-masters-class-running-order.flts**.

Click the *Add* button to add the selected competitors to the start list (Figure 3). Click the OK button in the *Start List* editor to accept the start order.

WARNING: it is not possible to proof the start order list in the *Start List* editor. Only Bib and competitor Name are shown on the start order display, so the only way to verify that you have the correct age class running order and random draw within age class is to exit the *Start List* screen and use the separate *Run Start List* report to obtain the necessary view of the start list. This is a significant usability deficiency: there is insufficient information displayed on the screen where the work is done to be able to perform the task properly. Category is necessary information for working on the start order for an age class competition.

***** DRAFT *****

Confirm that the *List* value in the upper *Inquiries* panel now contains the number of competitors in the entry list (Figure 4).

Review and Print First Run Start Order

Click on the *Run Start List* report and select *Run 1* to preview or print the first run start order. (Figure 4)

Tip: always preview the start list before printing so that you can check that the start order is correct. If any anomalies are detected, you must note the problem and the necessary correction and return to the *Manage Runs* screen and re-open the *Start List* window to adjust the start list.

The run 1 start list is always printed in start order. For a masters start list, fields should include Order, Bib, Category (age class), name, year born, and USSA ID. Recommended fields to include are Mbr (Member Type) with short-term membership and license issue markers. Optionally include Team and Nation. (Figure 5)

A sample set of print settings for a masters run 1 start list is provided in the vola config resources posted on <http://ussamasters.org/raceops/vola> - use the *Load* button on the *Run Start List* dialog to load the settings **print-formats/ ussa-masters-start-list-run1.edf**. By default, the start list is printed in compressed format in 2 columns.

To print the start list with age class headers, click the *Filters* button in the print options window and apply the masters age classes filter specifications from **filters/ussa-masters-class-running-order.flts**. The start list will now be grouped within age class groups, with a subheader describing each age class. (Figure 6).

Adjusting the Run 1 Start Order

To make any adjustments to the first run start order, click the *Start List* button on the *Manage Runs* screen to open the *Start List* editor.

To remove a competitor from the start list, select the competitor to be removed, and click the red X button at the upper left to remove the competitor from the start list.

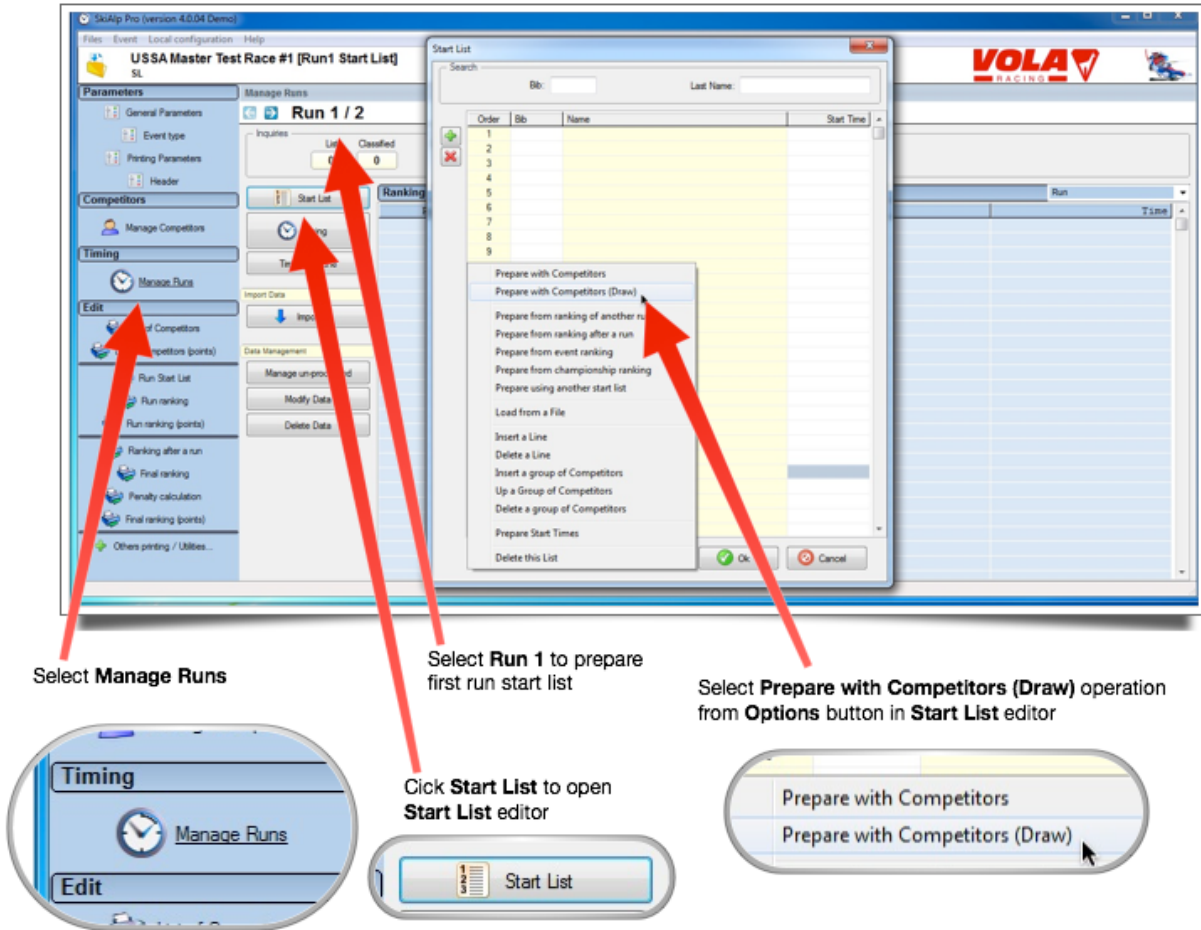
To add a competitor to the start list, click the green Plus button at the upper left to add an additional entry in the start list. Enter the Bib number of the competitor, then drag the competitor to the correct position in the start list.

Tip: ordinarily a late addition should be added at the end of their age class once the start list has been established.

WARNING: as noted above, it is not possible to locate age class breaks in the start order list in the *Start List* editor due to the lack of Category field on the display. You will need a print copy of the start list with the category information in order to locate the insertion point to add a competitor.

Figure 1: Prepare start list with random draw of competitors

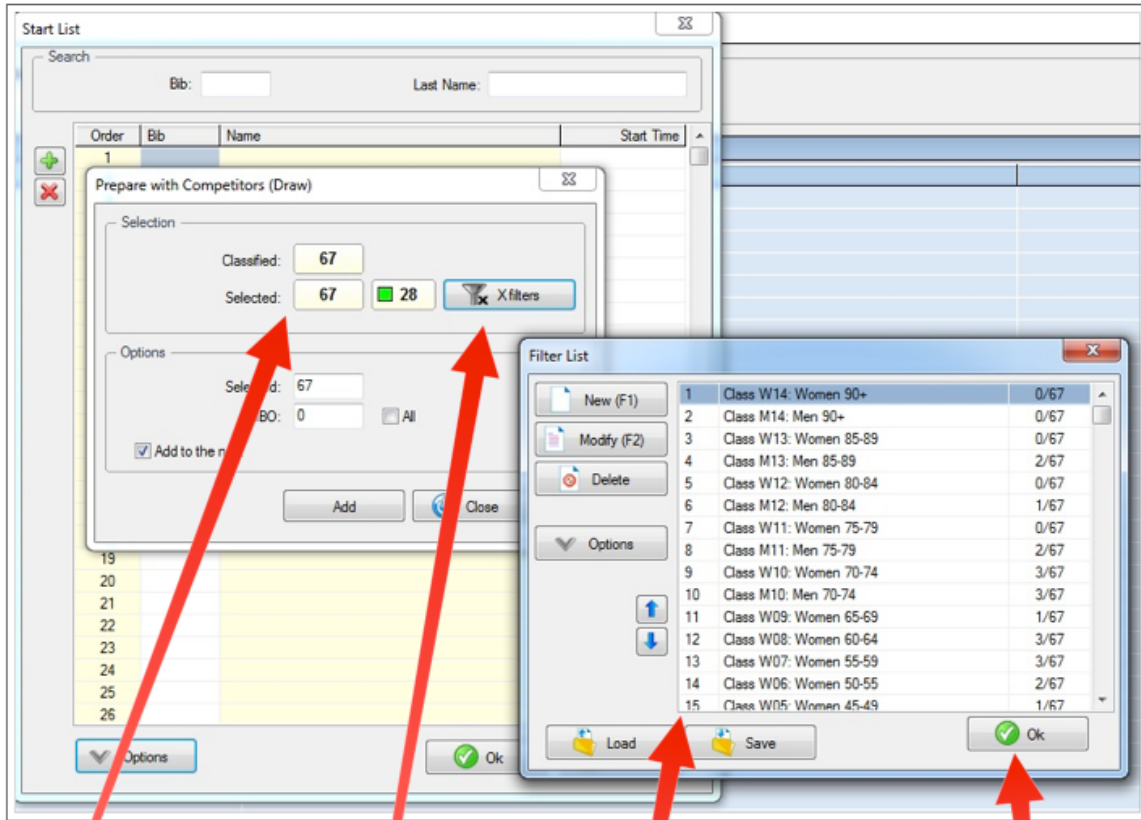
Masters Run 1 Start Order: Random draw of competitors within class



*** DRAFT ***

Figure 2: Use masters age class running order filter for random draw within age class

**Masters Run 1 Start Order: Random draw of competitors within class
in Masters age class running order filter**



All competitors are selected for the first run

Click on the **Filters** button to open the **Filters List** editor

Load the USSA masters age class running order filters (**ussa-masters-class-running-order.flts**)

Click **OK** to apply the filters

*** DRAFT ***

Figure 3: Competitors added to start list

The screenshot shows a software window titled "Start List" with a search bar at the top. Below the search bar are two input fields: "Bib:" and "Last Name:". The main area contains a table with the following data:

Order	Bib	Name	Start Time
1	75	DeMattei Gaetano	
2	100	Mouck Gary	
3	63	Pomey Carl	
4	93	Meritt Don	
5	50	Sulser Martin	
6	101	Pettigrew Marcie	
7	57	Hogan Sandy	
8	112	Marco Sherie	
9	105	Kim Iloo	
10	44	Smith Don	
11	141	Tilley James	
12	144	Faris Kathryn	
13	14	Crowell Linda	
14	11	Lewis Deb	
15	207	Spicher Lors	
16	15	Andrews Emily	
17	198	Cook Susan	
18	58	Feddis Mary	
19	80	Mirviss Annette	
20	168	Wentworth Kim	
21	13	Braun Ingrid	
22	81	Levy Andrea	
23	90	Simmons Dan	
24	24	Crowell Sam	
25	28	Tanzman Ron	
26	118	Mashaw Dave	

At the bottom of the window, there are three buttons: "Options" (with a dropdown arrow), "Ok" (with a green checkmark icon), and "Cancel" (with a red 'X' icon). On the left side of the table, there are two small icons: a green plus sign and a red minus sign.

***** DRAFT *****

Figure 3: Run 1 statistics after start order created

Manage Runs

← → **Run 1 / 2**

Inquiries

List	Classified	Did Not Start	Did Not Finish	Disqualified	Not Processed
67	0	0	0	0	67

1 2 3 Start List

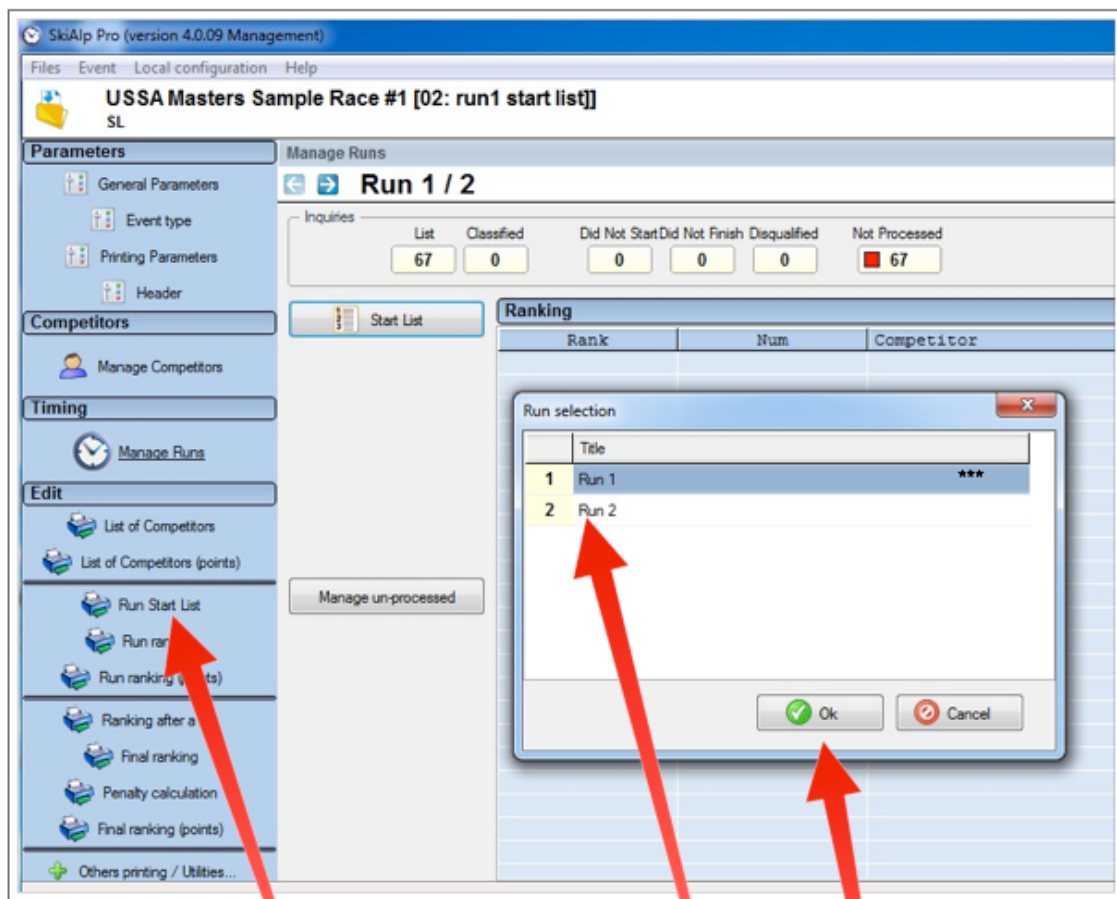
Ranking

Rank	Num	Competitor

*** DRAFT ***

Figure 4. Print Run 1 Start List

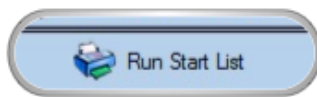
Print Run 1 Start List



Click **Run Start List**

Select **Run 1**

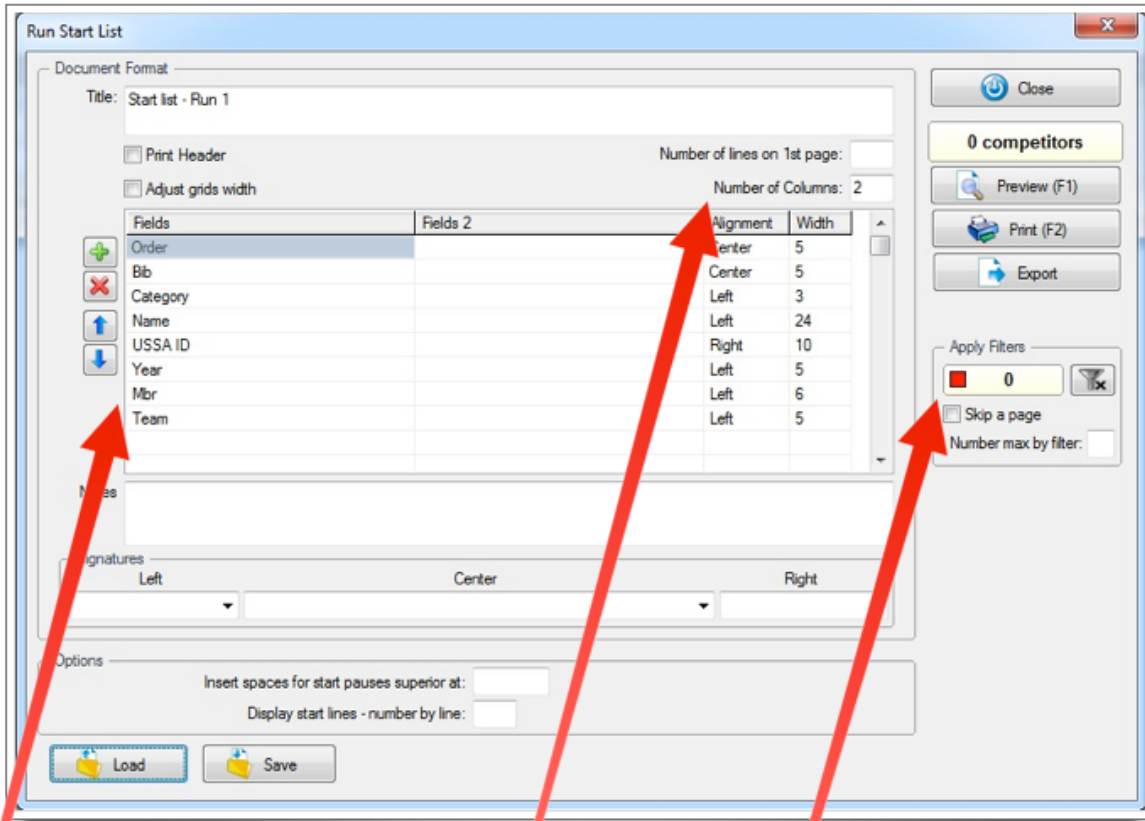
Click **OK** to display print options



*** DRAFT ***

Figure 5. Run 1 Start List (compressed)

Print Run 1 Start List (compressed format)



Use 2 columns for compressed print format

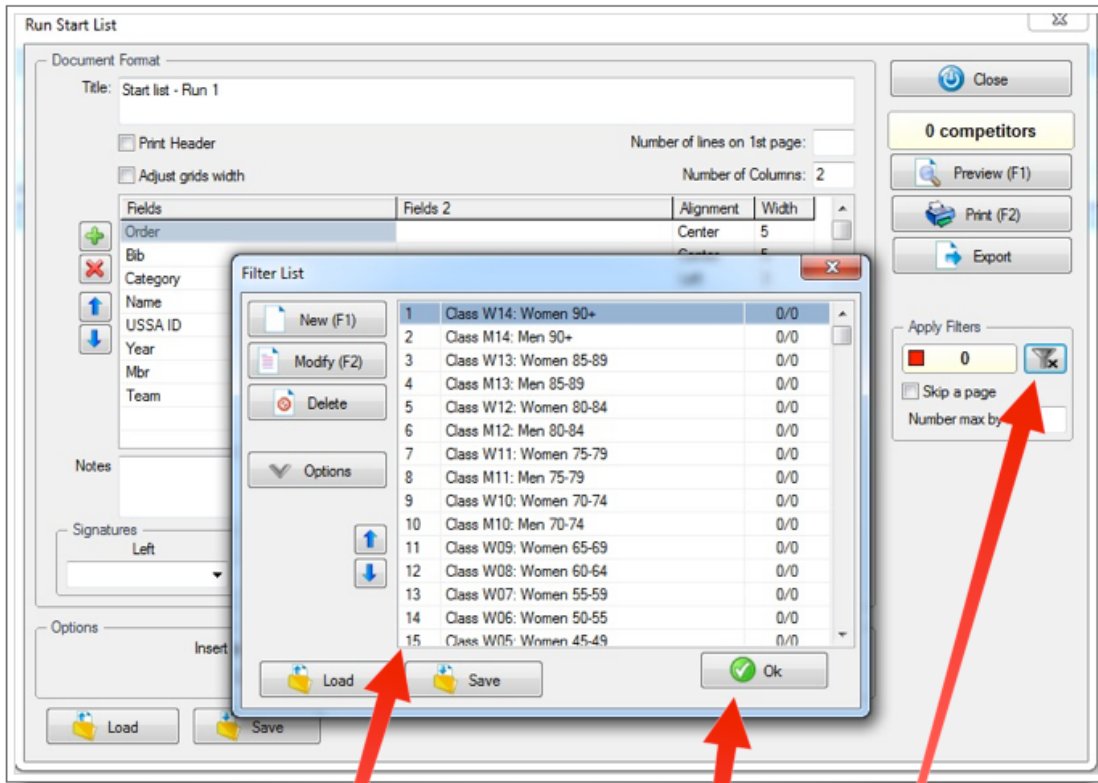
Standard masters fields: Bib, Category, Name, Year born, USSA #
Recommended: Mbr (flag ST, mark *** issues to resolve)
Optional: include Nation, Team if relevant for your event

No filters (print in start list order, no class subheaders)

*** DRAFT ***

Figure 6. Run 1 Start List (group by class)

Print Run 1 Start List (group by class)



Load the USSA masters age class running order filters (ussa-masters-class-running-order.flts)

Click **OK** to apply the filters

Click on the **Filters** button to open the **Filters List** editor

After applying the age class filters, the Filters box turns green to confirm age class groupings will be used for the report.

